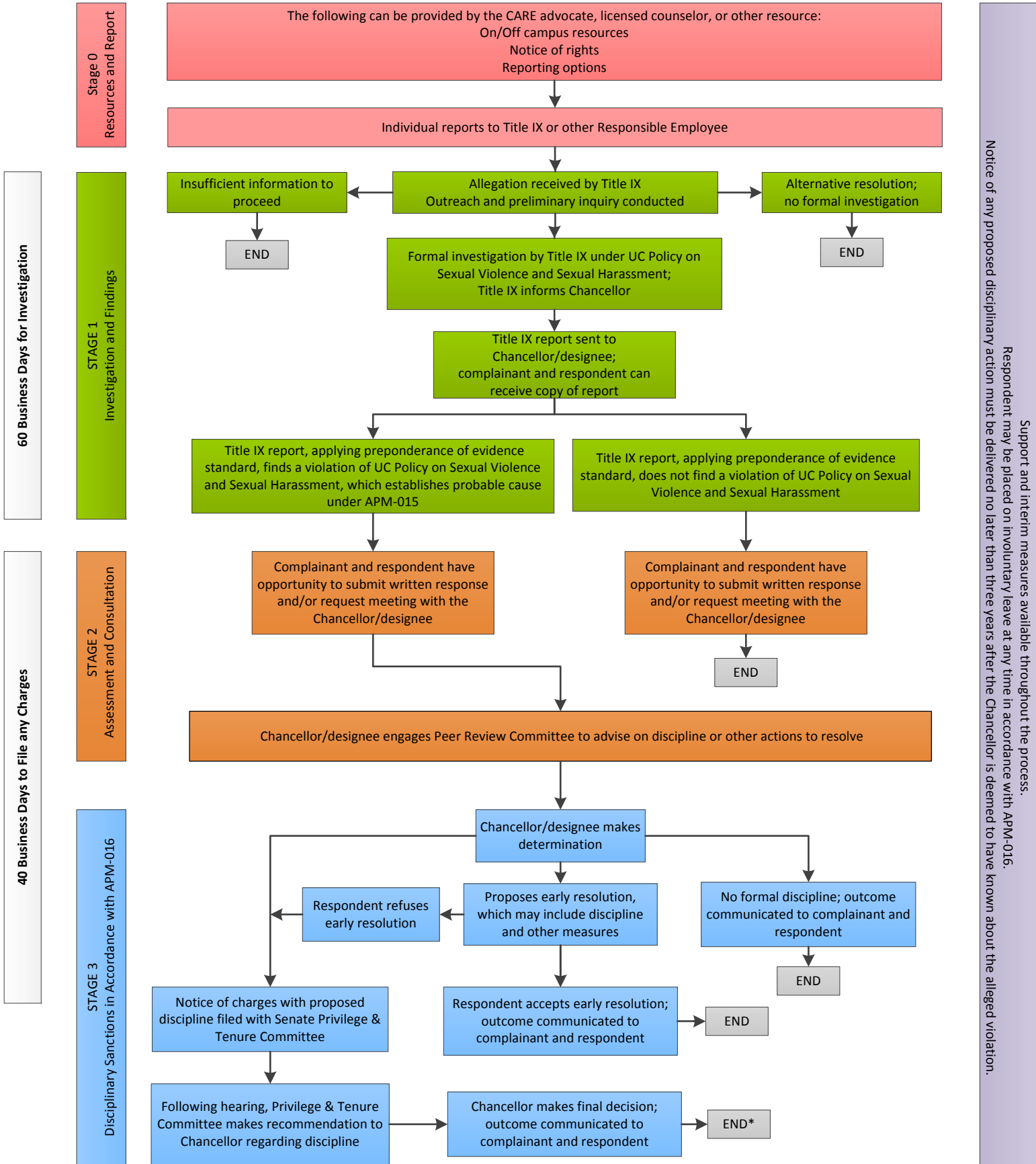


UNIVERSITY OF CALIFORNIA  
SENATE FACULTY ADJUDICATION MODEL – PROCESS FLOW CHART



\*See APM-016 regarding dismissal of faculty respondent with tenure or security of employment

Support and interim measures available throughout the process.  
Respondent may be placed on involuntary leave at any time in accordance with APM-016.  
Notice of any proposed disciplinary action must be delivered no later than three years after the Chancellor is deemed to have known about the alleged violation.